

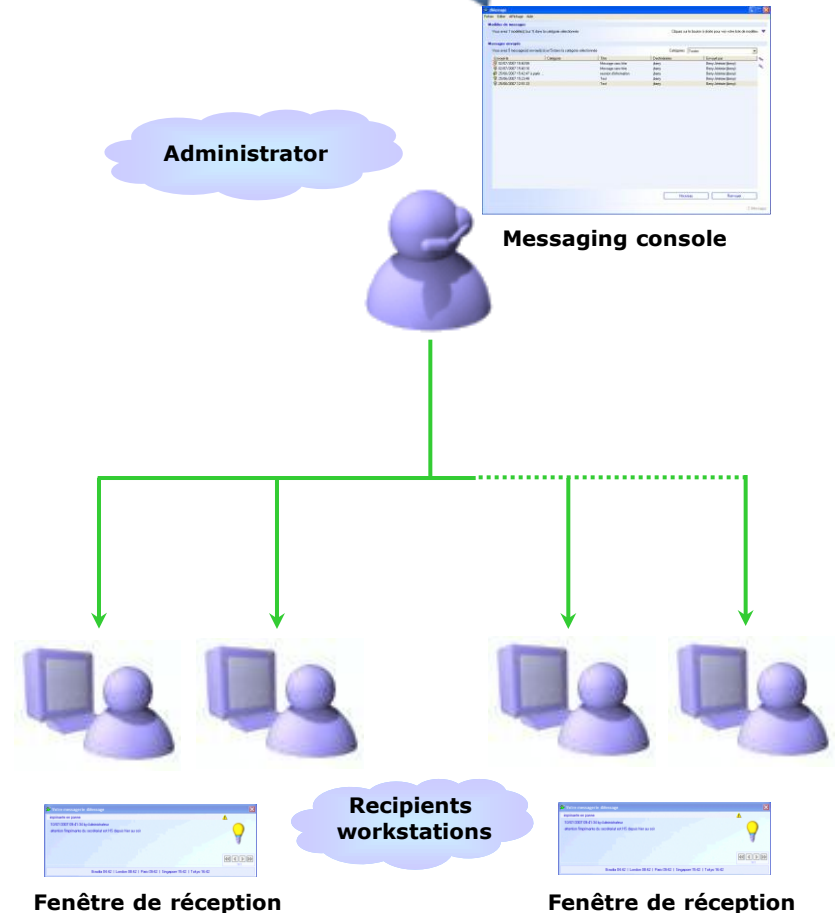
dMessage

— Tutorial —

dMessage™ is a new communication tool to send targeted pop-up messages over your enterprise-wide LAN.

dMessage™ let's you send pop-up messages:

- Selecting recipients directly from your company LDAP directory.
- Quickly and precisely thanks to the filter rule library.

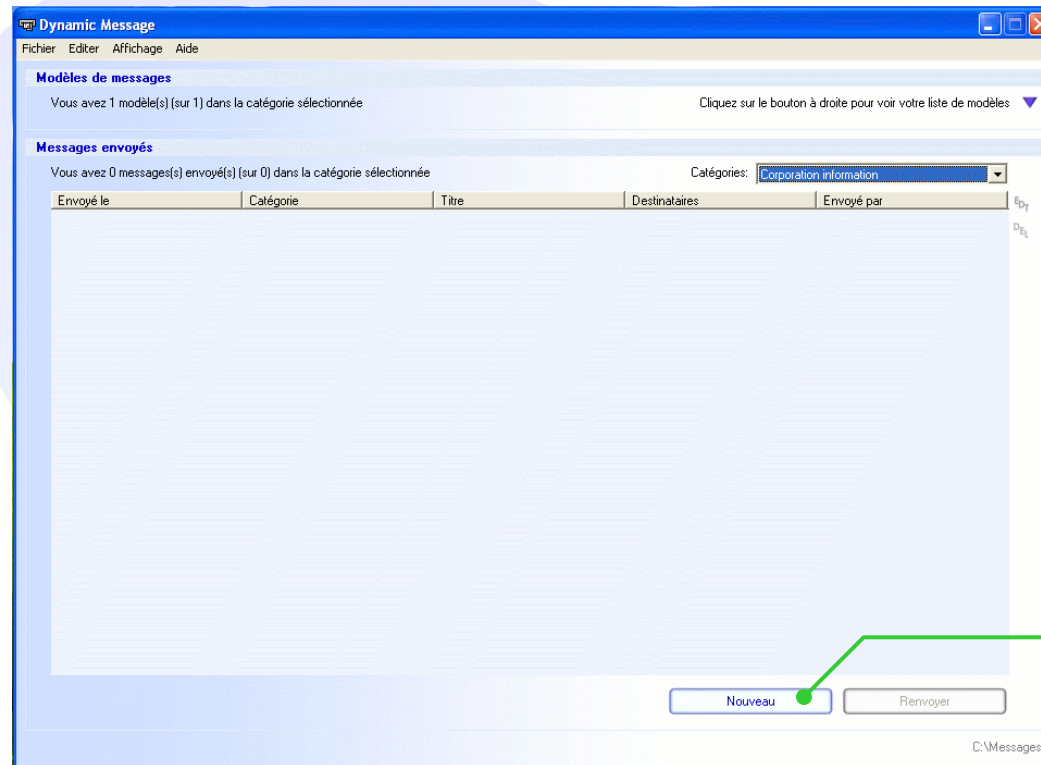


dMessage™ console

dMessage™ console let's you:

- create and send messages
- manage your messages templates
- archive your messages

Learn in this tutorial how to create and send your first message !



To start, click here

Step 1: Edit your message

3 steps to send a message

Step 1
Edit your message

Step 2
Select recipients

Step 3 (optional)
Define messaging filters rules

The screenshot shows a window titled "Edition du message '20070712093349'". It has several sections:

- Paramètres de base:** Includes a "Niveau" dropdown menu currently set to "Information" (with a green dot next to it), a "Catégorie" dropdown, and a checkbox "Afficher une bulle sur réception du message".
- Texte:** Includes a "Liste des destinataires" and "Paramètres optionnels" buttons.
- Langue par défaut:** A section for language settings.
- Contenu du message:** Contains a "Titre" field (empty) and a "Description" text area with the text "Rédiger votre message".
- Signature:** Shows the name "Dupont Jean-Pierre" with a green dot next to it.
- Avancé:** A section for advanced options with a dropdown arrow.
- Buttons:** "Envoyer" and "Annuler" buttons at the bottom.

1 Define message priority

2 Choose a title

3 Write message content

4 Sign message

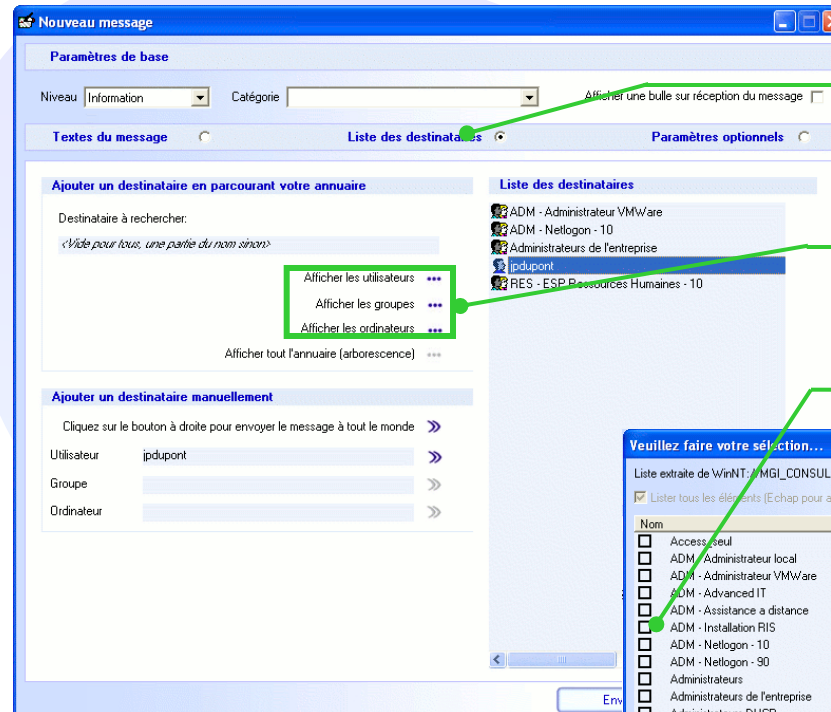
Step 2 : Select recipients

3 steps to send a message

Step 1
Edit your message

Step 2
Select recipients

Step 3 (optional)
Define messaging filters rules



1 Tick « Recipients list »

2 Click ... to view LDAP directory

3 Select recipients

4 Click OK

Step 3 : Define messaging filters (This step is optional)

3 steps to send a message

Step 1
Edit your message

Step 2
Select recipients

Step 3 (optional)
Define messaging filter rules

1 Tick « Optional parameters »

2 Select a filter rule

3 Define filter parameters

4 Click « Add » to apply filter

5 Your message is ready to be sent !

Est vrai	Condition	Paramètre(s)
<input checked="" type="checkbox"/>	Existence d'un fich...	C:\Program Files\Internet Explore
<input checked="" type="checkbox"/>	Serveur de conne...	OXYGENE
<input checked="" type="checkbox"/>	Existence d'un dos...	C:\Program Files\dMessage

Contact us !

Some references



dMessage™ is not limited to features presented in this tutorial.

Go further with:

- › Messages templates
- › Import of rtf files
- › Documents sharing
- › Multiple languages management
- › ...



Interested in dMessage™?
Contact our team:

- › Web site : www.dmessage.com
- › Telephone : 01 53 53 41 01
- › E-Mail : contact@dmessage.com