

# dMessage™ installation guide

1



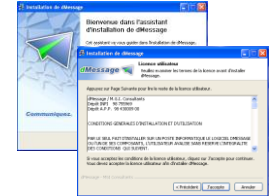
Double-click on dMessage installation icon. Then, click « Execute ».

2



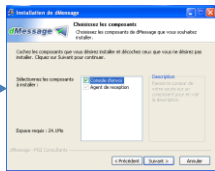
Select your language and click « OK ».

3



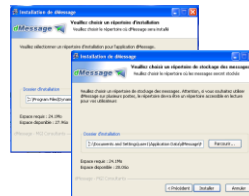
Click « Next » then « I agree ».

4



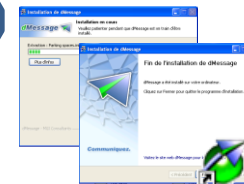
Include (or not) the messaging console and click « Next ».

5



Select the installation then the message storage folders. Click « Next » for each step.

6



Wait for the end of installation. Click « End ».

*dMessage™ is installed and ready to be used.*



*To receive messages, your users must have read-access rights for this folder. [For more information](#)*

FIN